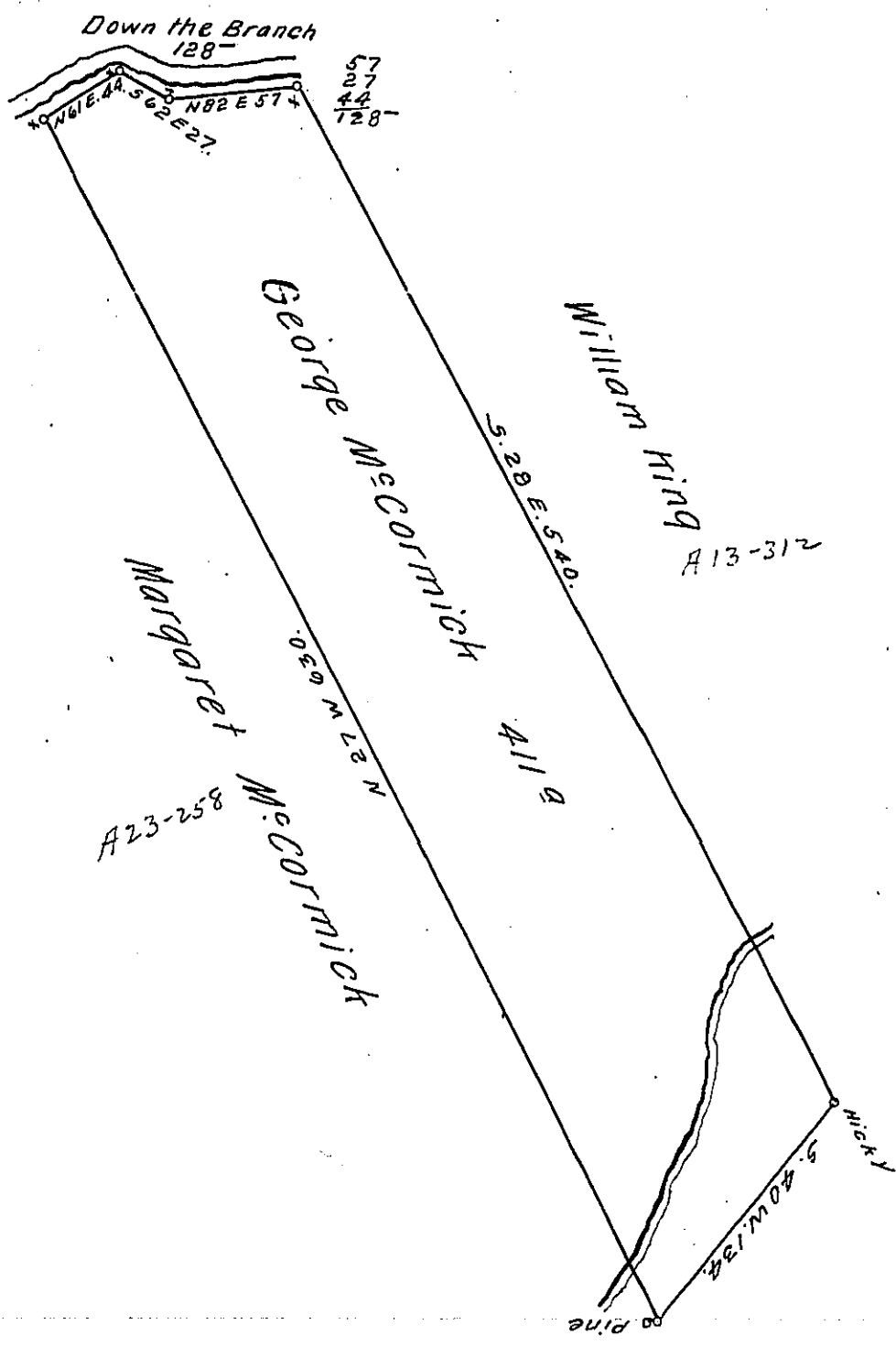


FORM NO. 1.



Draught of a Tract of Land situated on the Waters of Clear Field Creek Adjoining Land of William King & Land of Margaret McCormick in the County of Bedford Containing four hundred and eleven Acres & the Usual Allowance of six per Cent for Roads &c^e Surveyed for George McCormick June 9th 1785. In Pursuance of a Warrant Dated July 8th 1784.

To John Lukens Esq^r S. G.

George Woods D. S.

IN TESTIMONY that the above is a copy of the original remaining on file in the Department of Internal Affairs of Pennsylvania, made conformably to an Act of Assembly approved the 16th day of February, 1833, I have hereunto set my Hand and caused the Seal of said Department to be affixed at Harrisburg, this twenty fourth day of July 1911.

Henry Howell
 Secretary of Internal Affairs.